

BEAUTY LAUNCHPAD

February 2017
beautylaunchpad.com

THE OFFICIAL PUBLICATION OF INTERCOIFFURE

A woman with dark hair styled in a bun, wearing a shimmering purple sequined dress with a high collar and a low back, is walking on a runway. She is looking back over her shoulder towards the camera. In the background, a blurred figure in a red dress is visible on the runway.

*WE'RE
OBSESSED!*

Beauty buys we can't live without

COLLECTIONS:

Pai-Shau
Detra Smith
The Ammon Carver
Studio Team

Cool Tools

Whether it's taking your craft to the next level or just making your job a little easier, this selection of noteworthy gear deserves a spot on your station.



IRON ANGEL

For even heat distribution and virtually instant temp recovery, **HALOCOUTURE 100% Pure Ceramic Flat Iron** employs a patented integrated heating system: Floating plates are coated with six layers of pure ceramic, and infused with tourmaline to smooth cuticles and lock in moisture. halocouture.com



POLE POSITION

Give a nod to nostalgia with **Andis Professional SlimLine 2 T-Blade Trimmer** in a limited edition vintage barber pole design. The lightweight, corded/cordless model shapes and grooms necklines and facial hair while showing off some retro flair. andis.com



THE JET SET

Weighing less than a pound, **Valera Swiss Silent Jet 7500 Ionic** dryer boasts a durable DC-pro motor, ion generator and ripple wire heating element to ensure consistent, even temps sans overheating. The dryer also includes the brand's signature integrated Rotocord anti-tangle feature. valera.com



STYLE DOWNLOAD

Compact, lightweight **Olivia Garden iStyle Brush** proffers curved, scalp-hugging comfort and three Memory-Flex bristle profiles to complement different hair types: Gentle double bristles (shown) work best for fine strands, flexible dual-length bristles style medium tresses and tension bristles tame thick manes. oliviagarden.com



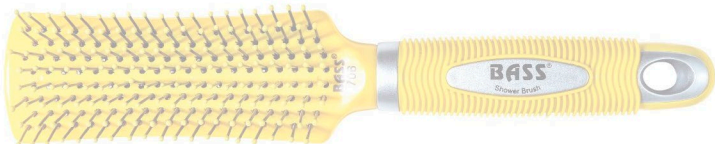
KNOCK ON WOOD

If you cater to male clientele and offer a traditional shave, **1907 by Fromm Wood Shaving Brush**, **Wood Straight Razor** and **Wood Safety Razor** are a classy trio. Features include premium German craftsmanship, walnut handles, badger bristles and carbon steel blades. frommbeauty.com



GO WITH THE FLOW

Give your hand a rest while still saturating strands, courtesy of **UNITE Continuous Spray Water Bottle**. Prime the bottle with two to three pumps, then hold down the trigger for several seconds of continuous mist. unitehair.com



HIGH AND DRY

Available in a variety of fun colors, **Bass Shower Brush** was designed with wet conditions in mind. With its heat-resistant nylon construction, the brush is 100-percent sanitizable—and no cushion to trap water means no risk of mold or mildew. bassshowerbrush.com



BAR NONE

The innovative shape of **Hot Tools Professional CurlBar** eases strain on wrists, shoulders and elbows while you're wrapping strands to create waves and ringlets. What's more, a built-in (and optional) timer can be set according to hair type and texture—and vibrates when it's time to move to the next section. hottools.com

MORE >